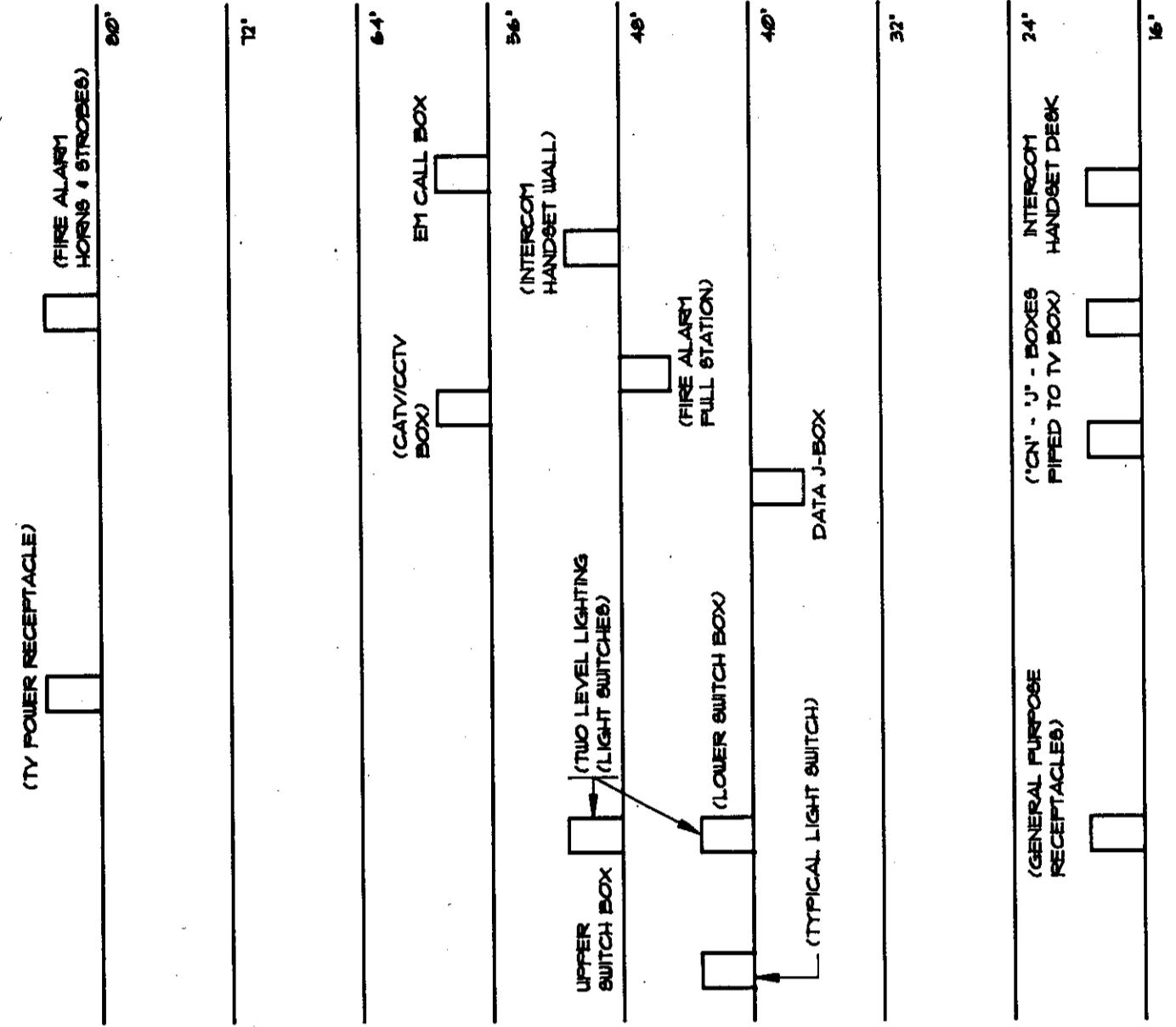
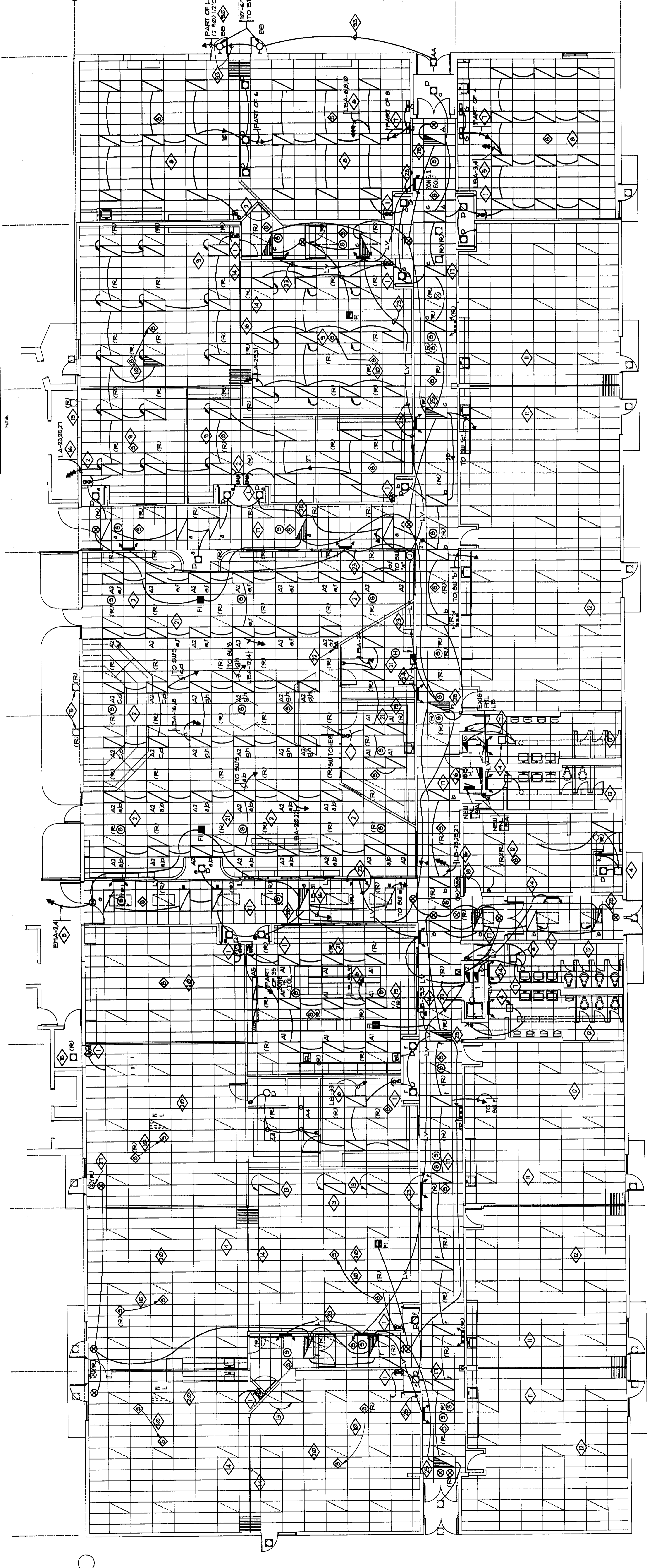


IMC-SWITCHBANK "A"
N.T.S.



ELECTRICAL BOX MOUNTING FOR WALLS-UON
N.T.S.

THIS RECORD DRAWING HAS BEEN PREPARED BY THE ARCHITECT AND IS TO BE USED FOR INFORMATION ONLY. THE ARCHITECT'S OFFICE SHALL NOT BE RESPONSIBLE FOR THE ACCURACY OF THIS RECORD DRAWING WHICH MAY HAVE BEEN MODIFIED BY THE CONTRACTOR. THE ARCHITECT'S OFFICE SHALL NOT BE RESPONSIBLE FOR THE ACCURACY OF THIS RECORD DRAWING WHICH MAY HAVE BEEN MODIFIED BY THE CONTRACTOR. THE ARCHITECT'S OFFICE SHALL NOT BE RESPONSIBLE FOR THE ACCURACY OF THIS RECORD DRAWING WHICH MAY HAVE BEEN MODIFIED BY THE CONTRACTOR.

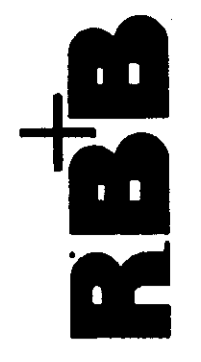


- NOTES:
1. ALL LIGHT FIXTURES TYPE "A" UNLESS OTHERWISE NOTED.
 2. SEE ARCHITECT'S REFLECTED CEILING FOR EXACT LOCATION OF FIXTURES.
 3. ELECTRICAL CONTRACTOR MAY REMOVE EXISTING FLOUORESCENT FIXTURES IN NEW AREAS AS NOTED.

LIGHTING PLAN-SOUTH
1/8" = 1'-0"

Poudre #1 School District
ADDITION & REMODEL
CACHE LA Poudre ELEMENTARY
F. COLLINS COLORADO

Robb, Bremer, and Breib, Inc
125 S. Howe - Suite 980
Fort Collins, CO 80521



JOB NUMBER: 915
DRAWN: R.C.C.H.
CHECKED: R.B.
ISSUE: 1 OCT 1992
REVISIONS: AS-BUILTS

SHEET NAME: LIGHTING FLOOR PLAN SOUTH FOD
SHEET NUMBER: 16.4

ELECTRICAL ENGINEERS
R. J. MCINTYRE AND ASSOCIATES, INC.
1010 27TH AVENUE NORTH, SUITE 202
GREAT FORT, COLORADO 80622
CONTACT (303) 566-3000 - FAX (303) 566-1444